



# BARWELL CHURCH OF ENGLAND ACADEMY

WORKING IN PARTNERSHIP WITH ST MARY'S CHURCH BARWELL

HEADTEACHER: MISS V NEWMAN

**BELIEVE    ACHIEVE    SUCCEED**  
**LEARNING THAT LASTS A LIFETIME**

**Love thy neighbour in a flourishing school community**

Dear Parent/Carer

## DEVELOPING AN INDIVIDUAL HEALTHCARE PLAN FOR YOUR CHILD

Thank you for informing us of your child's medical condition. I enclose a copy of the school's policy for supporting pupils at school with medical conditions for your information.

A central requirement of the policy is for an individual healthcare plan to be prepared, setting out what support each pupil needs and how this will be provided. Individual healthcare plans are developed in partnership between the school, parents, pupils, and the relevant healthcare professional who can advise on your child's case. The aim is to ensure that we know how to support your child effectively and to provide clarity about what needs to be done, when and by whom. Although individual healthcare plans are likely to be helpful in the majority of cases, it is possible that not all children will require one. We will need to make judgements about how your child's medical condition impacts on their ability to participate fully in school life, and the level of detail within plans will depend on the complexity of their condition and the degree of support needed. (Please see the end of this letter for the procedures involved.)

We have arranged a meeting to discuss this. Please let us know if you would like us to invite any medical practitioners, healthcare professionals or specialists and please bring any other information you would like us to see to the meeting.

If you are unable to attend, it would be helpful if you could request a copy of the individual healthcare plan template and return it, together with any relevant information.

Please contact the school office if you have any questions or need further advice.

Kind regards

*Victoria Newman*

**Headteacher**



High Street, Barwell, Leicester. LE9 8DS  
Telephone 01455 842047      Fax 01455 442294  
[admin@barwell-barwellacademy.org](mailto:admin@barwell-barwellacademy.org)      [www.barwellceacademy.co.uk](http://www.barwellceacademy.co.uk)  
Follow us on Twitter! @barwellacademy





# BARWELL CHURCH OF ENGLAND ACADEMY

WORKING IN PARTNERSHIP WITH ST MARY'S CHURCH BARWELL

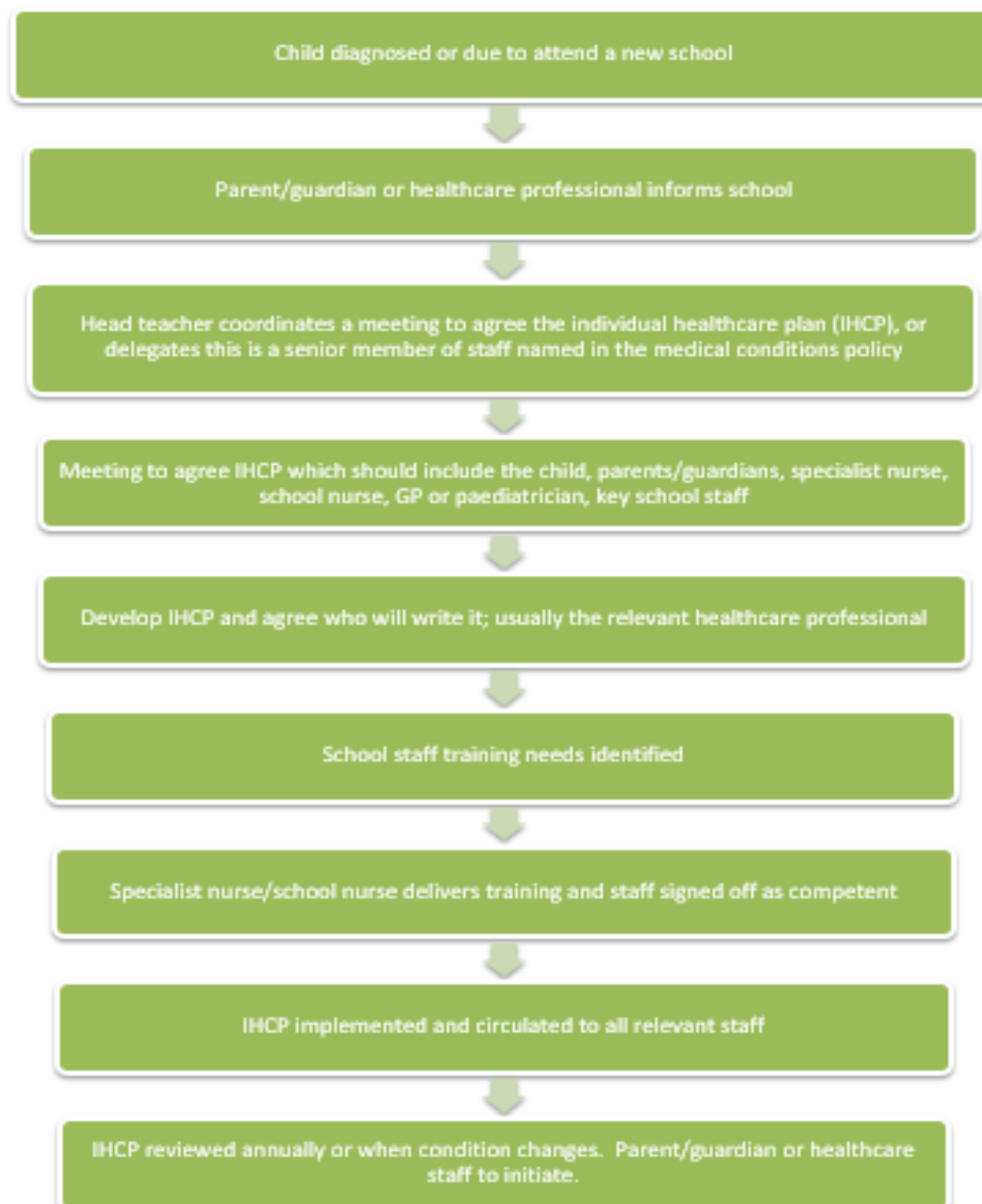
HEADTEACHER: MISS V NEWMAN

## **BELIEVE   ACHIEVE   SUCCEED**

**LEARNING THAT LASTS A LIFETIME**

**Love thy neighbour in a flourishing school community**

### Procedure for the development of an Individual Health Care Plan (IHCP)



High Street, Barwell, Leicester. LE9 8DS  
Telephone 01455 842047      Fax 01455 442294  
[admin@barwell-barwellacademy.org](mailto:admin@barwell-barwellacademy.org)      [www.barwellceacademy.co.uk](http://www.barwellceacademy.co.uk)  
Follow us on Twitter! @barwellacademy

